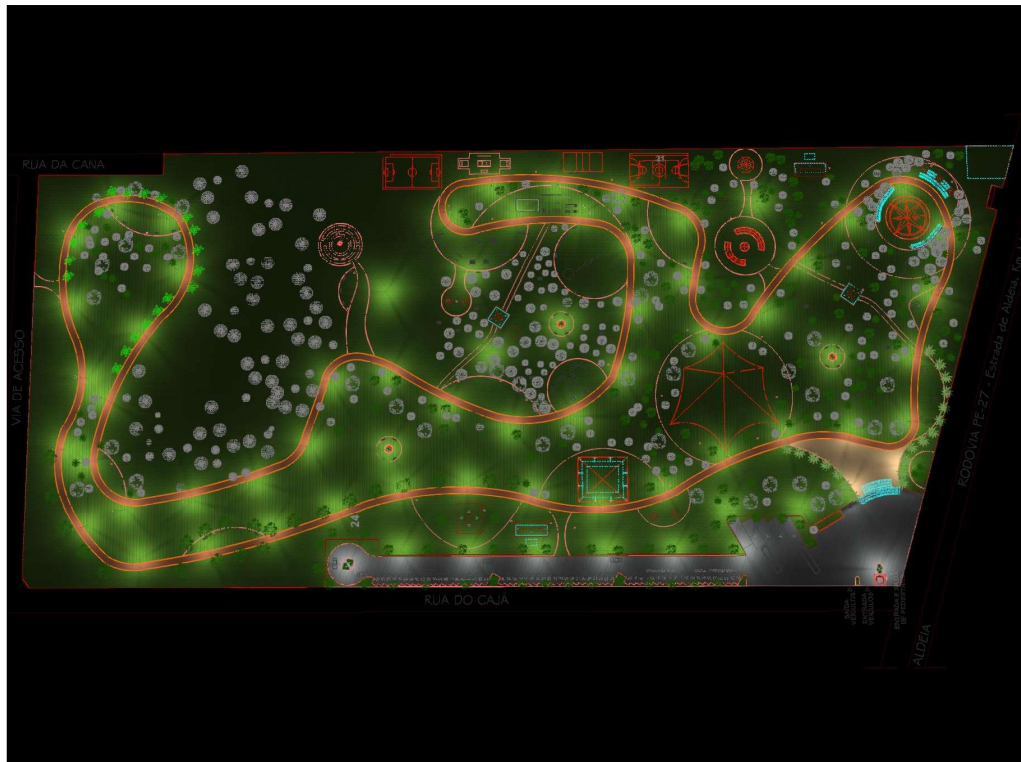


PARQUE ALDEIA DOS CAMARÁS

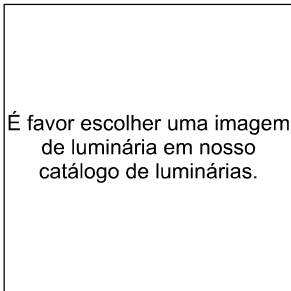
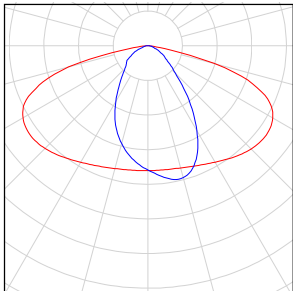


Conteúdo

PARQUE ALDEIA DOS CAMARÁS

Lista de luminárias.....	3
PARQUE ALDEIA DOS CAMARÁS	
Aludax - (1x).....	4
Praça Espaço do Saber	
Esquema de posição de luminárias.....	7
Lista de luminárias.....	12
Visões.....	13
Superfícies de cálculo.....	17
Pista superior / Potência luminosa perpendicular (adaptivo).....	18
Área externa a pista / Potência luminosa perpendicular (adaptivo).....	22
Área interna a Pista / Potência luminosa perpendicular (adaptivo).....	26
Pista inferior / Potência luminosa perpendicular (adaptivo).....	30
Área Total / Potência luminosa perpendicular.....	34

PARQUE ALDEIA DOS CAMARÁS

Quantidade	Luminária (Emissão luminosa)		
213	Aludax - Emissão luminosa 1 Equipagem: 1x Grau de actuação operacional: 100% Fluxo luminoso de lâmpada: 18635 lm Fluxo luminoso da luminária: 18635 lm Potência: 119.4 W Rendimento luminoso: 156.0 lm/W Indicações colorimétricas 1x: CCT 3000 K, CRI 100	 <p>É favor escolher uma imagem de luminária em nosso catálogo de luminárias.</p>	

Fluxo luminoso total das lâmpadas: 3969255 lm, Fluxo luminoso total das luminárias: 3969255 lm, Potência total: 25432.2 W, Rendimento luminoso: 156.1 lm/W

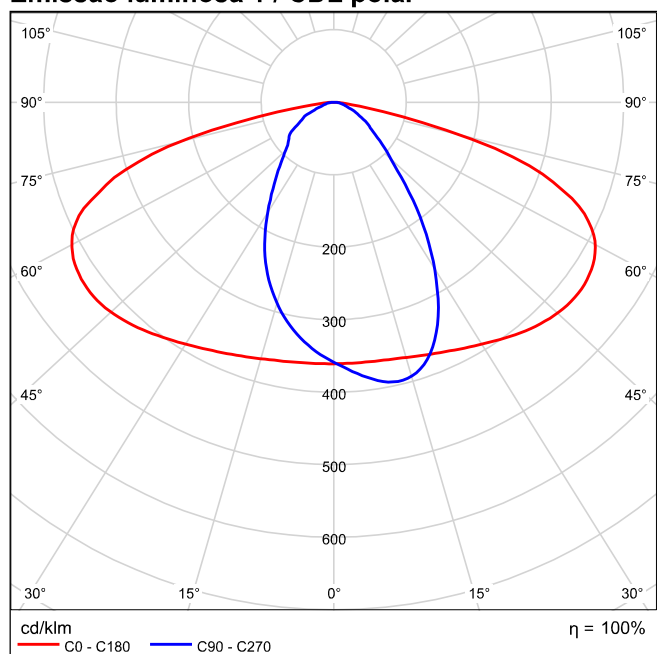
Aludax 1x

É favor escolher uma imagem de luminária em nosso catálogo de luminárias.

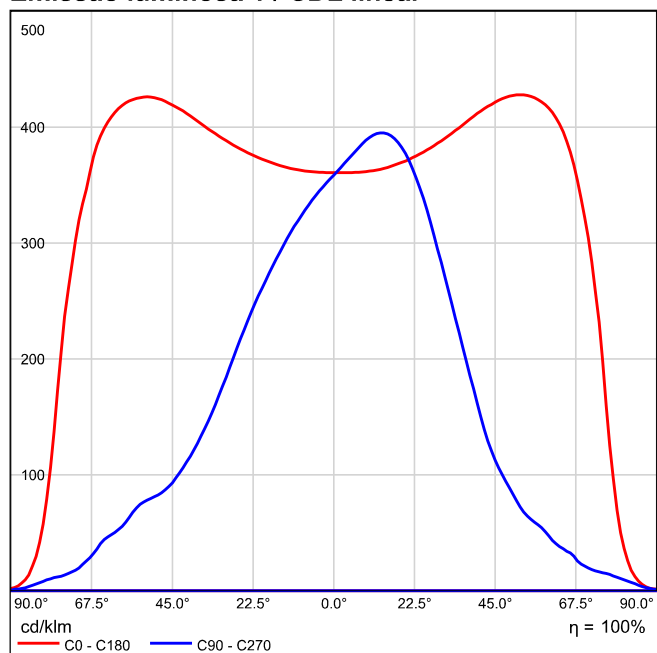
Grau de actuação operacional: 100%
 Fluxo luminoso de lâmpada: 18635 lm
 Fluxo luminoso da luminária: 18635 lm
 Potência: 119.4 W
 Rendimento luminoso: 156.0 lm/W

Indicações colorimétricas
 1x: CCT 3000 K, CRI 100

Emissão luminosa 1 / CDL polar

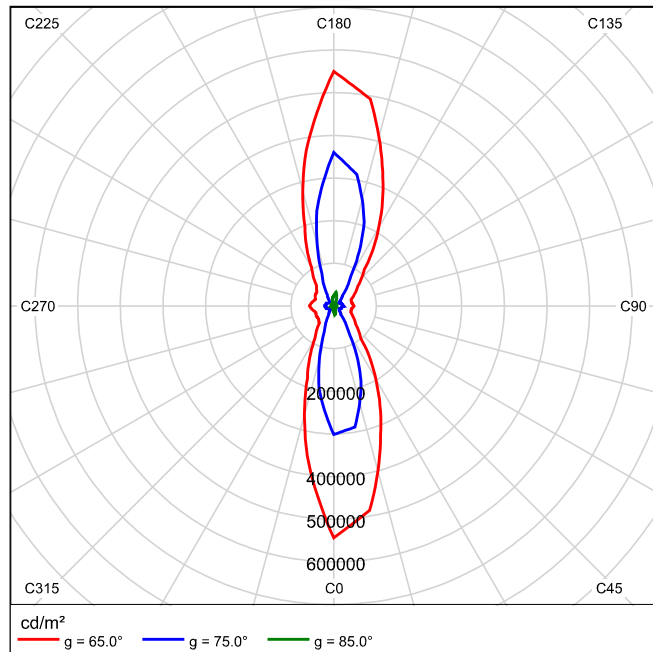


Emissão luminosa 1 / CDL linear



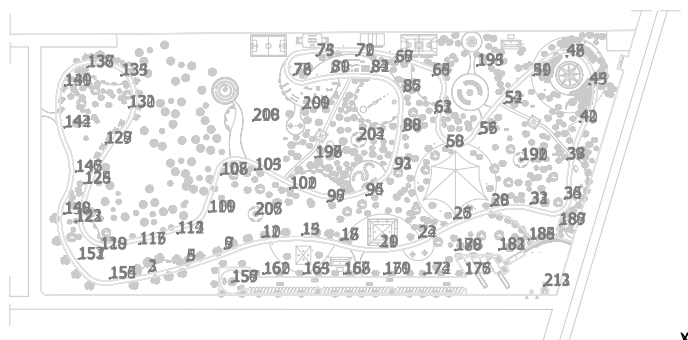
Não é possível gerar um diagrama de cone, pois a distribuição de luz é assimétrica.

Emissão luminosa 1 / Diagrama de densidade de luminância



Não é possível gerar um diagrama UGR, pois a distribuição de luz é assimétrica.

Praça Espaço do Saber



Aludax

N°	X [m]	Y [m]	Altura de montagem [m]	Factor de manutenção
1	-401.429	53.460	9.100	0.80
2	-402.179	53.893	9.100	0.80
3	-402.179	53.027	9.100	0.80
4	-372.531	61.482	9.100	0.80
5	-373.281	61.915	9.100	0.80
6	-373.281	61.049	9.100	0.80
7	-343.971	70.630	9.100	0.80
8	-344.721	71.064	9.100	0.80
9	-344.721	70.197	9.100	0.80
10	-315.339	79.321	9.100	0.80
11	-315.952	79.933	9.100	0.80
12	-316.176	79.097	9.100	0.80
13	-285.491	81.187	9.100	0.80
14	-285.924	81.937	9.100	0.80
15	-286.357	81.187	9.100	0.80
16	-256.046	76.964	9.100	0.80
17	-256.270	77.800	9.100	0.80
18	-256.882	77.188	9.100	0.80
19	-226.413	71.616	9.100	0.80
20	-226.846	72.366	9.100	0.80
21	-227.279	71.616	9.100	0.80
22	-197.063	79.210	9.100	0.80
23	-197.813	79.643	9.100	0.80
24	-197.813	78.777	9.100	0.80
25	-170.604	93.270	9.100	0.80
26	-171.354	93.703	9.100	0.80
27	-171.354	92.837	9.100	0.80
28	-142.275	103.036	9.100	0.80
29	-142.887	103.649	9.100	0.80
30	-143.111	102.812	9.100	0.80
31	-112.824	104.215	9.100	0.80
32	-113.049	105.052	9.100	0.80
33	-113.661	104.439	9.100	0.80
34	-87.560	107.976	9.100	0.80
35	-87.560	108.843	9.100	0.80

Praça Espaço do Saber / Esquema de posição de luminárias

N°	X [m]	Y [m]	Altura de montagem [m]	Factor de manutenção
36	-88.310	108.409	9.100	0.80
37	-85.359	137.769	9.100	0.80
38	-85.135	138.605	9.100	0.80
39	-85.971	138.381	9.100	0.80
40	-75.683	166.059	9.100	0.80
41	-75.458	166.896	9.100	0.80
42	-76.295	166.672	9.100	0.80
43	-68.305	194.666	9.100	0.80
44	-68.529	195.503	9.100	0.80
45	-69.142	194.890	9.100	0.80
46	-85.418	216.385	9.100	0.80
47	-86.284	216.385	9.100	0.80
48	-85.851	215.635	9.100	0.80
49	-110.866	201.268	9.100	0.80
50	-111.090	202.104	9.100	0.80
51	-111.702	201.492	9.100	0.80
52	-132.329	180.342	9.100	0.80
53	-132.553	181.179	9.100	0.80
54	-133.165	180.567	9.100	0.80
55	-151.343	157.320	9.100	0.80
56	-151.776	158.070	9.100	0.80
57	-152.209	157.320	9.100	0.80
58	-176.368	147.706	9.100	0.80
59	-177.118	148.139	9.100	0.80
60	-177.118	147.273	9.100	0.80
61	-185.541	173.246	9.100	0.80
62	-185.541	174.112	9.100	0.80
63	-186.291	173.679	9.100	0.80
64	-186.651	201.732	9.100	0.80
65	-187.401	202.165	9.100	0.80
66	-187.401	201.299	9.100	0.80
67	-214.811	211.788	9.100	0.80
68	-215.561	212.221	9.100	0.80
69	-215.561	211.355	9.100	0.80
70	-244.342	216.956	9.100	0.80
71	-245.179	217.180	9.100	0.80
72	-244.955	216.343	9.100	0.80
73	-274.335	216.884	9.100	0.80
74	-275.201	216.884	9.100	0.80
75	-274.768	216.134	9.100	0.80
76	-291.864	202.403	9.100	0.80
77	-292.700	202.179	9.100	0.80
78	-292.088	201.567	9.100	0.80
79	-262.991	203.842	9.100	0.80
80	-263.424	204.592	9.100	0.80
81	-263.857	203.842	9.100	0.80
82	-233.063	204.053	9.100	0.80
83	-233.496	204.803	9.100	0.80
84	-233.929	204.053	9.100	0.80
85	-208.927	189.895	9.100	0.80
86	-209.793	189.895	9.100	0.80

Praça Espaço do Saber / Esquema de posição de luminárias

N°	X [m]	Y [m]	Altura de montagem [m]	Factor de manutenção
87	-209.360	189.145	9.100	0.80
88	-208.764	159.959	9.100	0.80
89	-209.514	160.392	9.100	0.80
90	-209.514	159.526	9.100	0.80
91	-215.573	130.803	9.100	0.80
92	-216.323	131.236	9.100	0.80
93	-216.323	130.370	9.100	0.80
94	-237.214	110.688	9.100	0.80
95	-237.214	111.554	9.100	0.80
96	-237.964	111.121	9.100	0.80
97	-266.314	106.495	9.100	0.80
98	-267.150	106.720	9.100	0.80
99	-266.926	105.883	9.100	0.80
100	-294.543	116.132	9.100	0.80
101	-295.293	116.565	9.100	0.80
102	-295.293	115.699	9.100	0.80
103	-320.989	130.269	9.100	0.80
104	-321.739	130.702	9.100	0.80
105	-321.739	129.836	9.100	0.80
106	-346.371	126.856	9.100	0.80
107	-347.121	127.289	9.100	0.80
108	-347.121	126.423	9.100	0.80
109	-355.748	98.365	9.100	0.80
110	-356.498	98.798	9.100	0.80
111	-356.498	97.932	9.100	0.80
112	-379.867	81.876	9.100	0.80
113	-379.643	82.712	9.100	0.80
114	-380.480	82.488	9.100	0.80
115	-408.708	73.720	9.100	0.80
116	-408.484	74.556	9.100	0.80
117	-409.321	74.332	9.100	0.80
118	-438.502	69.832	9.100	0.80
119	-437.890	70.445	9.100	0.80
120	-438.726	70.669	9.100	0.80
121	-456.618	90.808	9.100	0.80
122	-456.842	91.645	9.100	0.80
123	-457.454	91.032	9.100	0.80
124	-449.877	120.318	9.100	0.80
125	-450.743	120.318	9.100	0.80
126	-450.310	119.568	9.100	0.80
127	-433.805	150.431	9.100	0.80
128	-434.642	150.655	9.100	0.80
129	-434.418	149.818	9.100	0.80
130	-416.789	177.175	9.100	0.80
131	-416.356	177.925	9.100	0.80
132	-417.222	177.925	9.100	0.80
133	-421.929	201.588	9.100	0.80
134	-422.542	202.201	9.100	0.80
135	-422.766	201.364	9.100	0.80
136	-447.953	207.544	9.100	0.80
137	-447.729	208.381	9.100	0.80

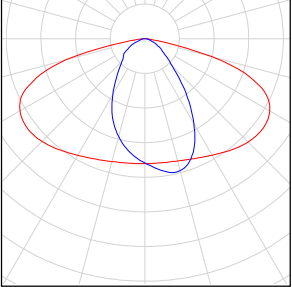
Praça Espaço do Saber / Esquema de posição de luminárias

Nº	X [m]	Y [m]	Altura de montagem [m]	Factor de manutenção
138	-448.565	208.157	9.100	0.80
139	-464.646	193.863	9.100	0.80
140	-465.396	194.296	9.100	0.80
141	-465.396	193.430	9.100	0.80
142	-465.009	162.575	9.100	0.80
143	-465.846	162.799	9.100	0.80
144	-465.622	161.962	9.100	0.80
145	-456.416	128.864	9.100	0.80
146	-457.166	129.297	9.100	0.80
147	-457.166	128.431	9.100	0.80
148	-465.082	97.103	9.100	0.80
149	-465.832	97.536	9.100	0.80
150	-465.832	96.670	9.100	0.80
151	-455.160	62.334	9.100	0.80
152	-454.727	63.084	9.100	0.80
153	-455.593	63.084	9.100	0.80
154	-430.807	48.036	9.100	0.80
155	-431.240	48.786	9.100	0.80
156	-431.673	48.036	9.100	0.80
157	-338.520	45.508	9.100	0.80
158	-339.270	45.941	9.100	0.80
159	-339.270	45.075	9.100	0.80
160	-314.692	51.663	9.100	0.80
161	-315.442	52.096	9.100	0.80
162	-315.442	51.230	9.100	0.80
163	-284.280	51.619	9.100	0.80
164	-285.030	52.052	9.100	0.80
165	-285.030	51.186	9.100	0.80
166	-253.858	51.586	9.100	0.80
167	-254.608	52.019	9.100	0.80
168	-254.608	51.153	9.100	0.80
169	-223.435	51.554	9.100	0.80
170	-224.185	51.987	9.100	0.80
171	-224.185	51.121	9.100	0.80
172	-193.012	51.521	9.100	0.80
173	-193.762	51.954	9.100	0.80
174	-193.762	51.088	9.100	0.80
175	-162.592	51.454	9.100	0.80
176	-163.342	51.887	9.100	0.80
177	-163.342	51.021	9.100	0.80
178	-169.465	69.554	9.100	0.80
179	-170.215	69.987	9.100	0.80
180	-170.215	69.121	9.100	0.80
181	-136.510	69.972	9.100	0.80
182	-137.260	70.405	9.100	0.80
183	-137.260	69.539	9.100	0.80
184	-114.098	77.713	9.100	0.80
185	-114.848	78.146	9.100	0.80
186	-114.848	77.280	9.100	0.80
187	-91.018	88.820	9.100	0.80
188	-91.768	89.253	9.100	0.80

Praça Espaço do Saber / Esquema de posição de luminárias

N°	X [m]	Y [m]	Altura de montagem [m]	Factor de manutenção
189	-91.768	88.387	9.100	0.80
190	-120.088	137.765	9.100	0.80
191	-120.838	138.198	9.100	0.80
192	-120.838	137.332	9.100	0.80
193	-152.974	209.221	9.100	0.80
194	-153.724	209.654	9.100	0.80
195	-153.724	208.788	9.100	0.80
196	-275.156	139.752	9.100	0.80
197	-275.906	140.185	9.100	0.80
198	-275.906	139.319	9.100	0.80
199	-284.585	176.685	9.100	0.80
200	-285.335	177.118	9.100	0.80
201	-285.335	176.252	9.100	0.80
202	-242.824	153.025	9.100	0.80
203	-243.574	153.458	9.100	0.80
204	-243.574	152.592	9.100	0.80
205	-320.462	96.606	9.100	0.80
206	-321.212	97.039	9.100	0.80
207	-321.212	96.173	9.100	0.80
208	-322.414	167.606	9.100	0.80
209	-323.164	168.039	9.100	0.80
210	-323.164	167.173	9.100	0.80
211	-102.415	42.757	9.100	0.80
212	-103.165	43.190	9.100	0.80
213	-103.165	42.324	9.100	0.80

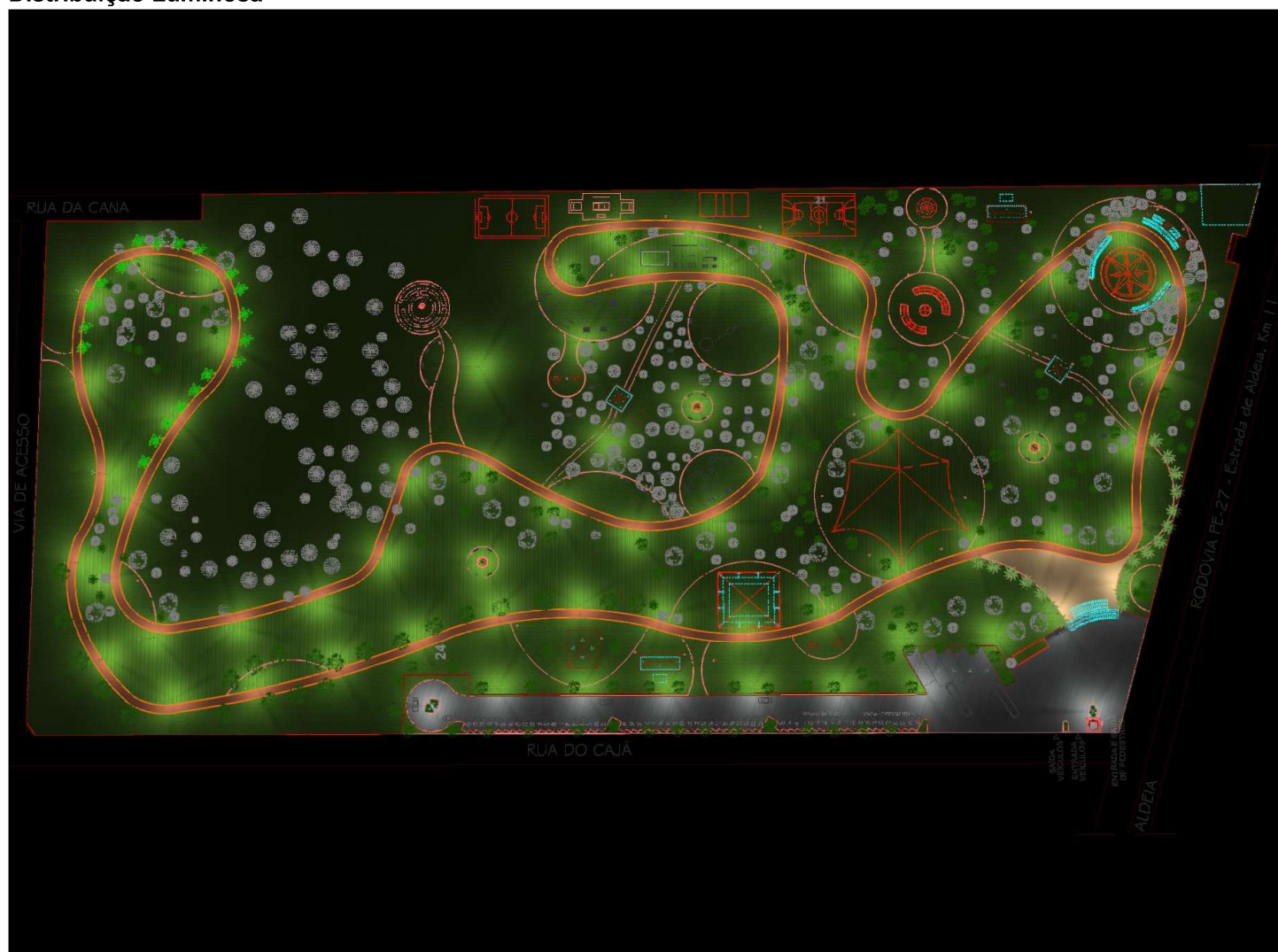
Praça Espaço do Saber

Quantidade	Luminária (Emissão luminosa)		
213	<p>Aludax - Emissão luminosa 1 Equipagem: 1x Grau de actuação operacional: 100% Fluxo luminoso de lâmpada: 18635 lm Fluxo luminoso da luminária: 18635 lm Potência: 119.4 W Rendimento luminoso: 156.0 lm/W</p> <p>Indicações colorimétricas 1x: CCT 3000 K, CRI 100</p>	<p>É favor escolher uma imagem de luminária em nosso catálogo de luminárias.</p>	

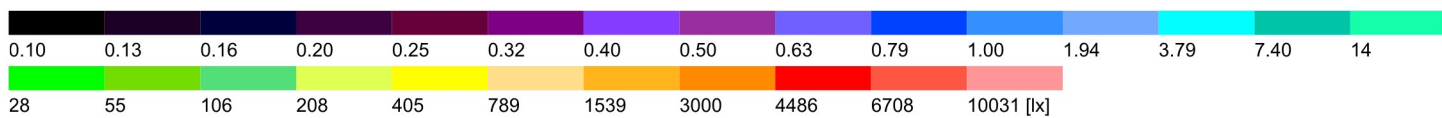
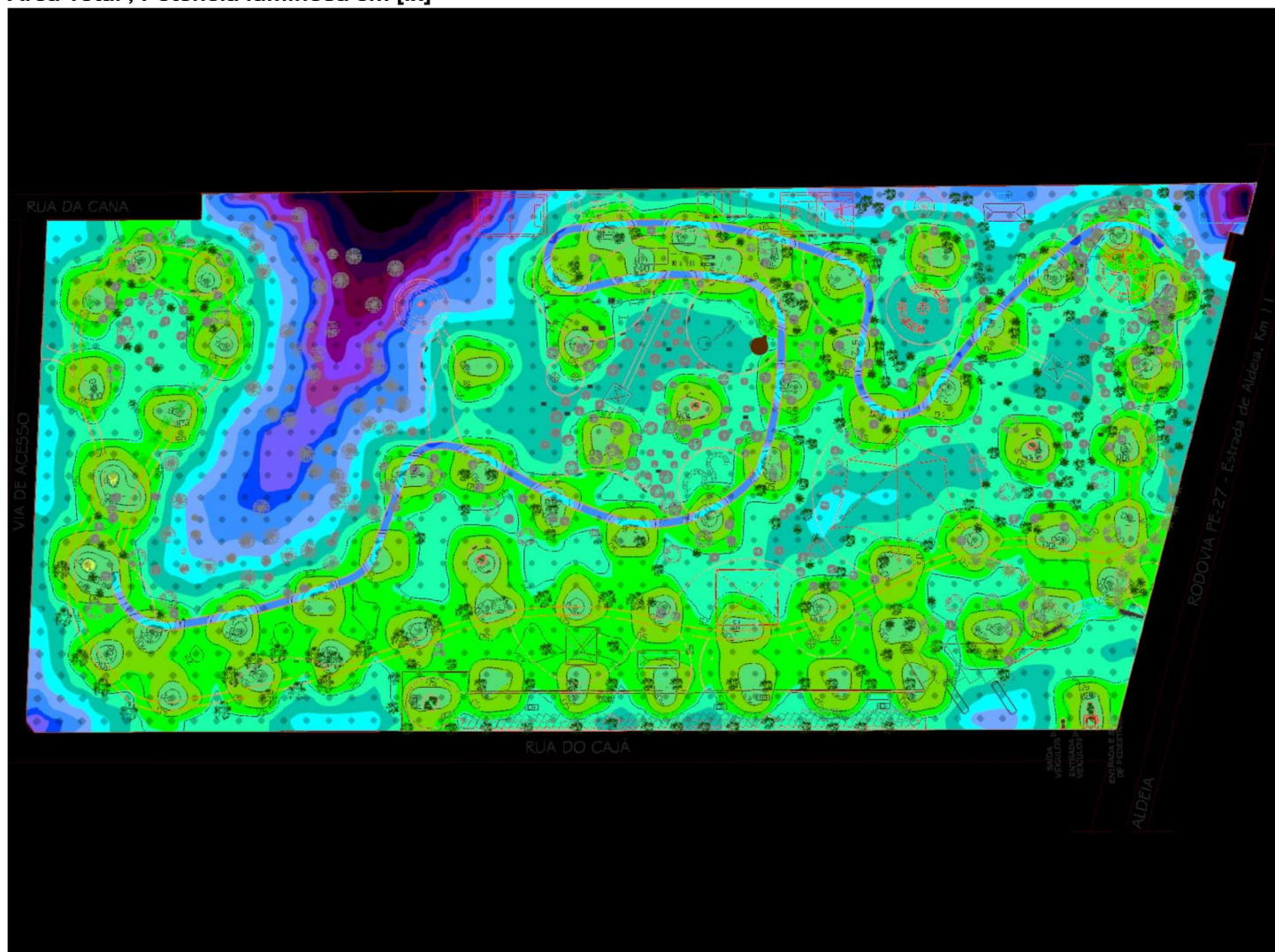
Fluxo luminoso total das lâmpadas: 3969255 lm, Fluxo luminoso total das luminárias: 3969255 lm, Potência total: 25432.2 W, Rendimento luminoso: 156.1 lm/W

Praça Espaço do Saber

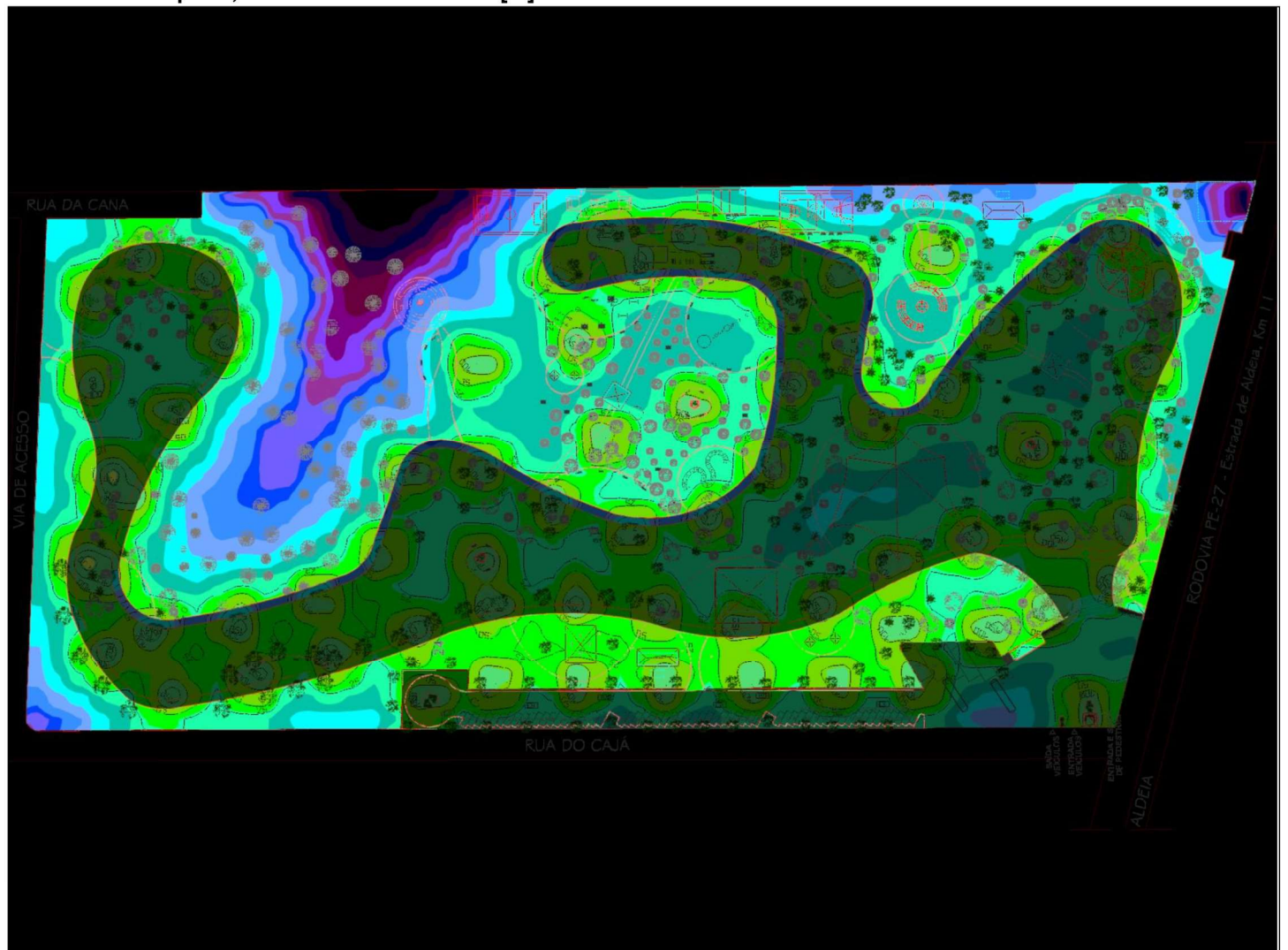
Distribuição Luminosa



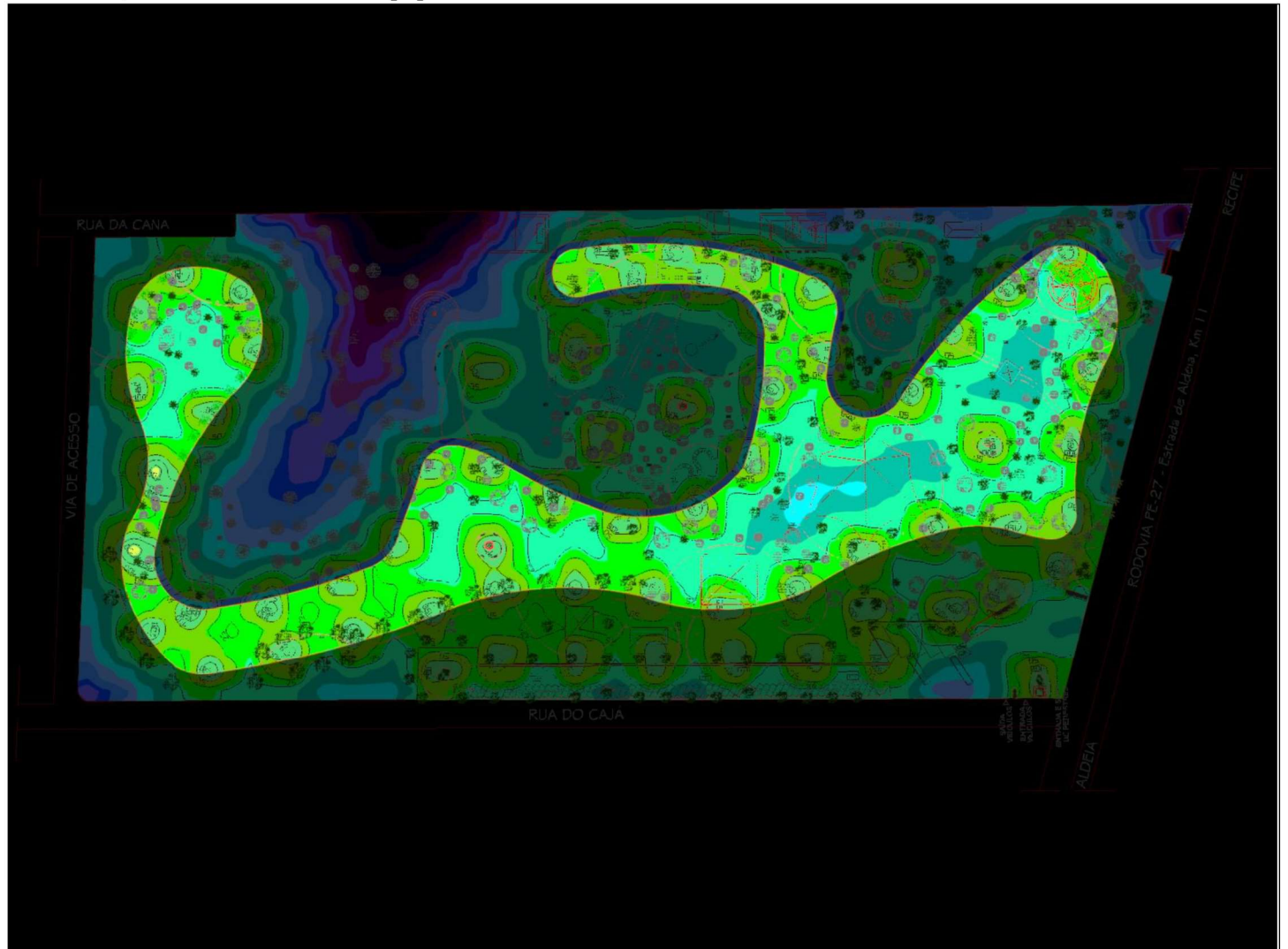
Área Total , Potência luminosa em [lx]



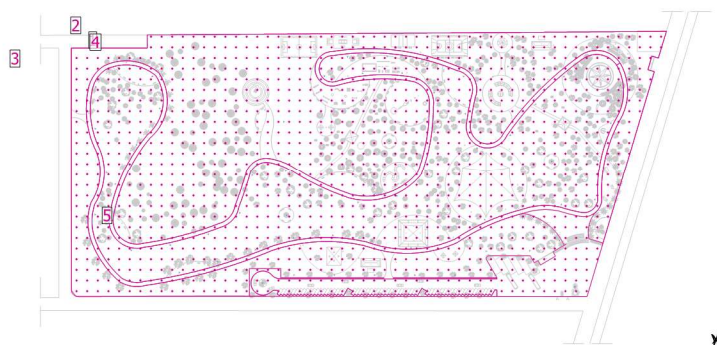
Área externa a pista, Potência luminosa em [lx]



Área Total, Potência luminosa em [lx]



Praça Espaço do Saber



Factor de manutenção: 0.80

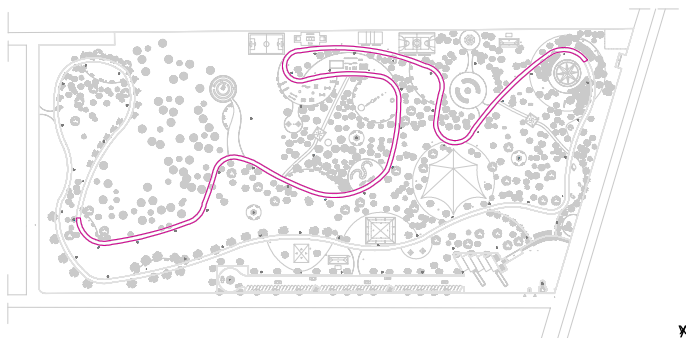
Geral

Superfície	Resultado	Médio (Nominal)	Min	Máx	Mín/Médio	Mín/ Máx
2 Área Total	Potência luminosa perpendicular [lx] Altura: 0.000 m	36.4	0.086	227	0.002	0.000

Objetos de resultado de superfície

5 Pista superior	Potência luminosa perpendicular (adaptivo) [lx]	76.0	12.0	194	0.16	0.062
	Densidade de luminância [cd/m ²]	3.54	0.56	9.05	0.16	0.062
3 Área externa a pista	Potência luminosa perpendicular (adaptivo) [lx]	22.5	0.099	205	0.004	0.000
	Densidade de luminância [cd/m ²]	1.06	0.005	9.66	0.005	0.001
4 Área interna a Pista	Potência luminosa perpendicular (adaptivo) [lx]	51.5	2.88	233	0.056	0.012
	Densidade de luminância [cd/m ²]	2.43	0.14	11.0	0.058	0.013
1 Pista inferior	Potência luminosa perpendicular (adaptivo) [lx]	74.7	16.1	204	0.22	0.079
	Densidade de luminância [cd/m ²]	3.48	0.75	9.50	0.22	0.079

Pista superior / Potência luminosa perpendicular (adaptivo)



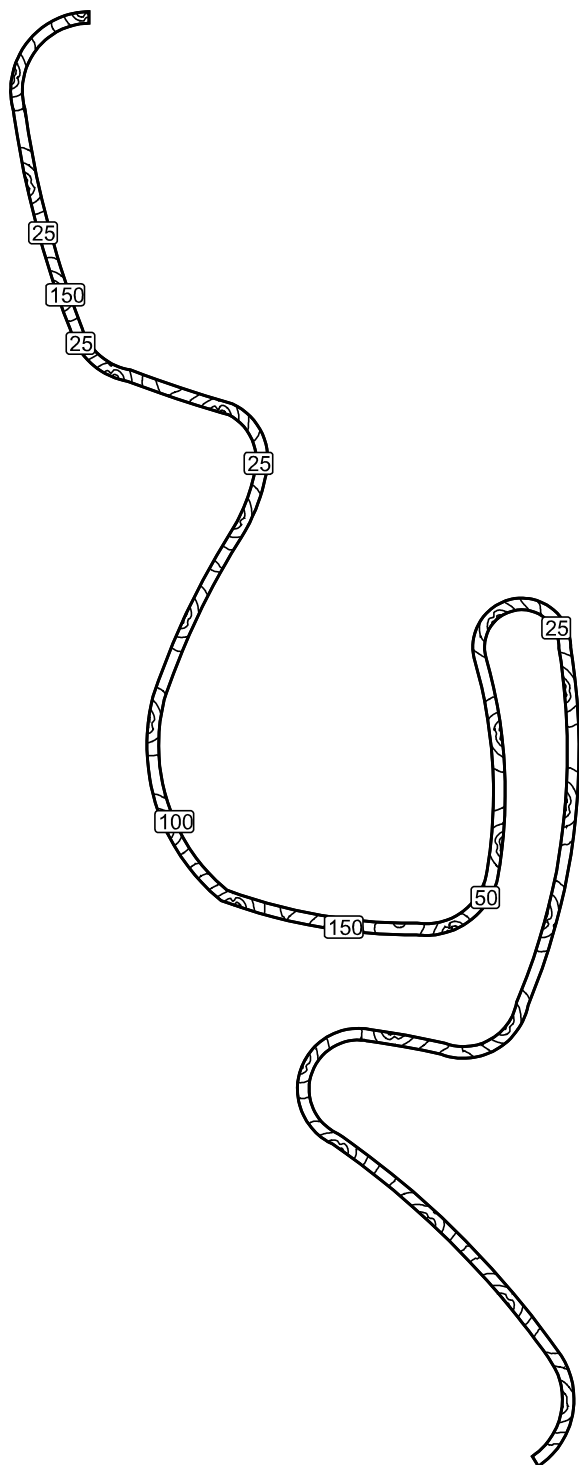
Factor de manutenção: 0.80

Pista superior: Potência luminosa perpendicular (adaptivo) (Superfície)

Cenário de Luz: Cenário de Luz 1

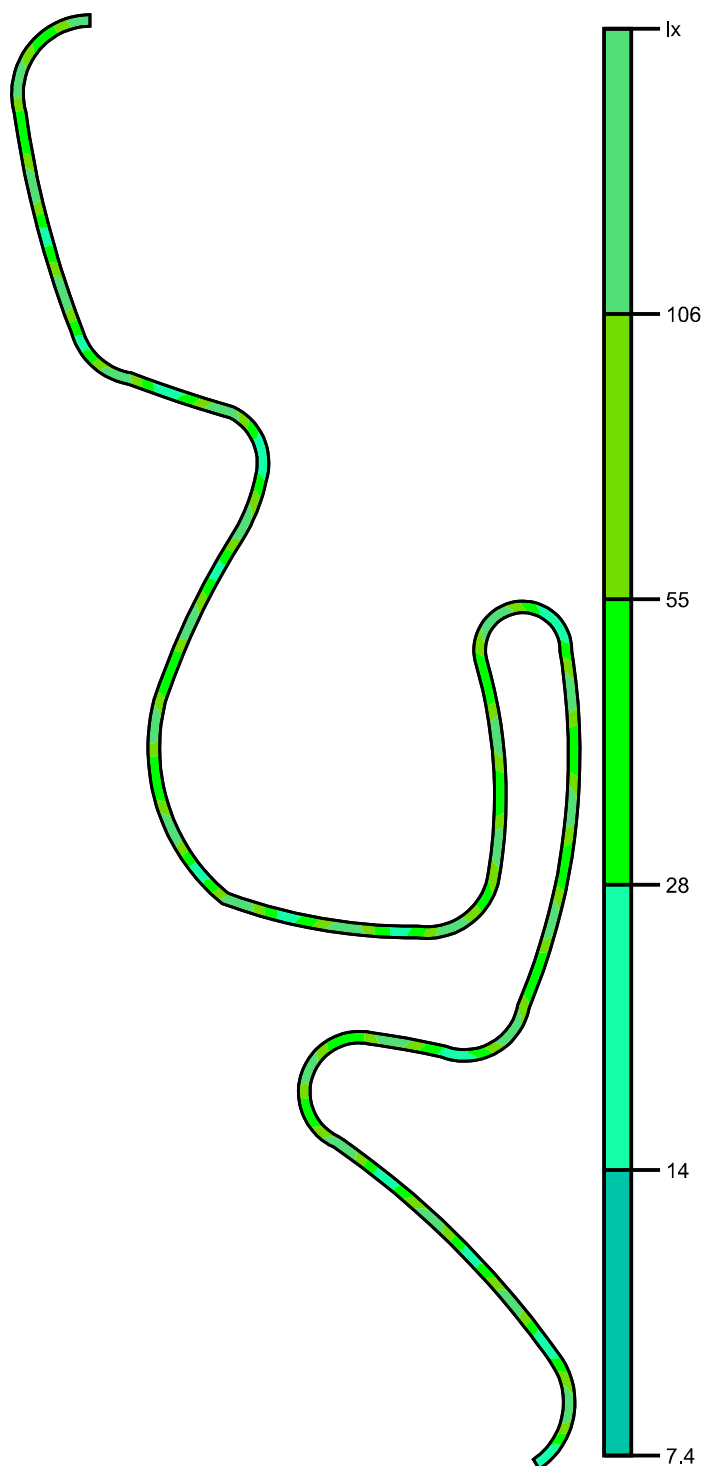
Médio: 76.0 lx, Min: 12.0 lx, Máx: 194 lx, Mín/Médio: 0.16, Mín/ Máx: 0.062

Linhas isográficas [lx]



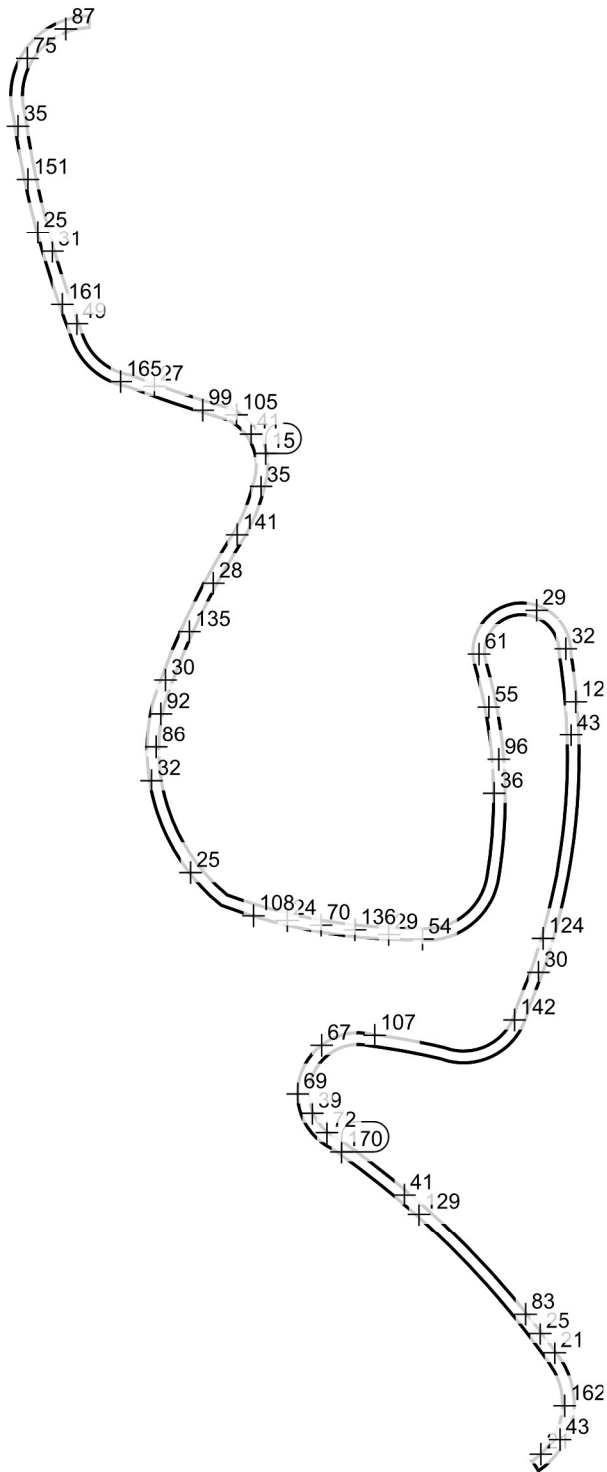
Escala: 1 : 2000

Cores falsas [lx]



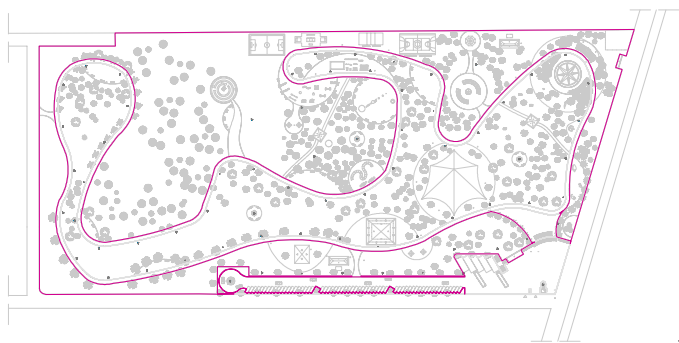
Escala: 1 : 2000

Grelha de valores [lx]



Escala: 1 : 2000

Área externa a pista / Potência luminosa perpendicular (adaptivo)



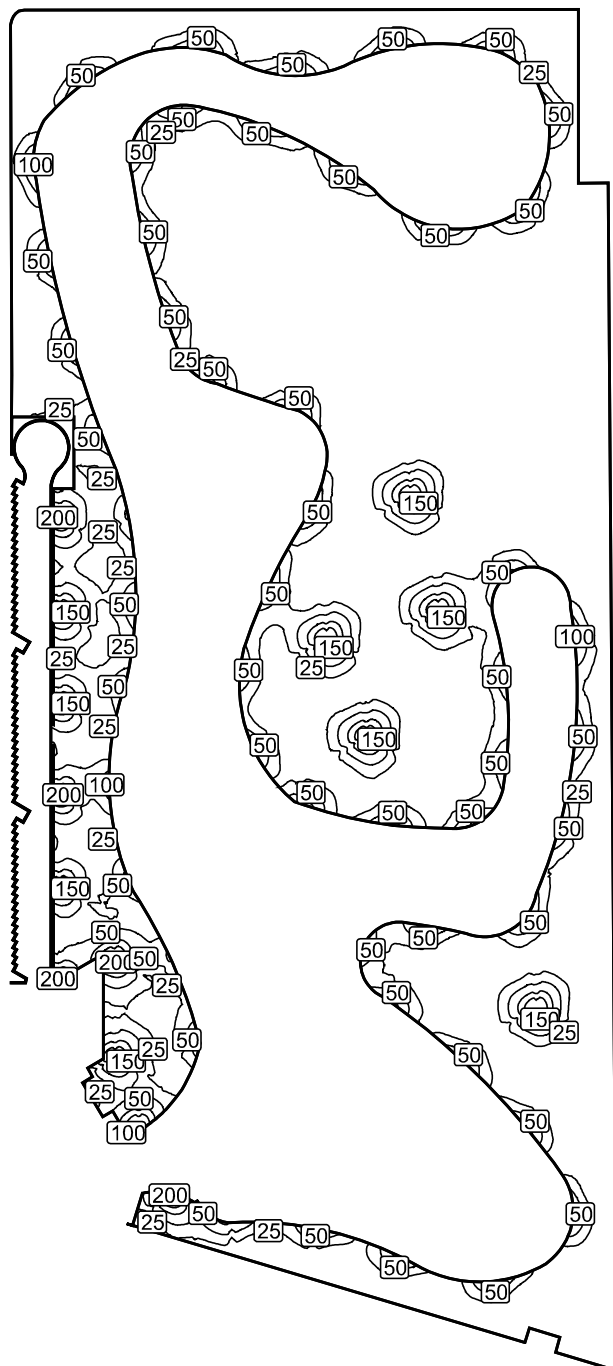
Factor de manutenção: 0.80

Área externa a pista: Potência luminosa perpendicular (adaptivo) (Superfície)

Cenário de Luz: Cenário de Luz 1

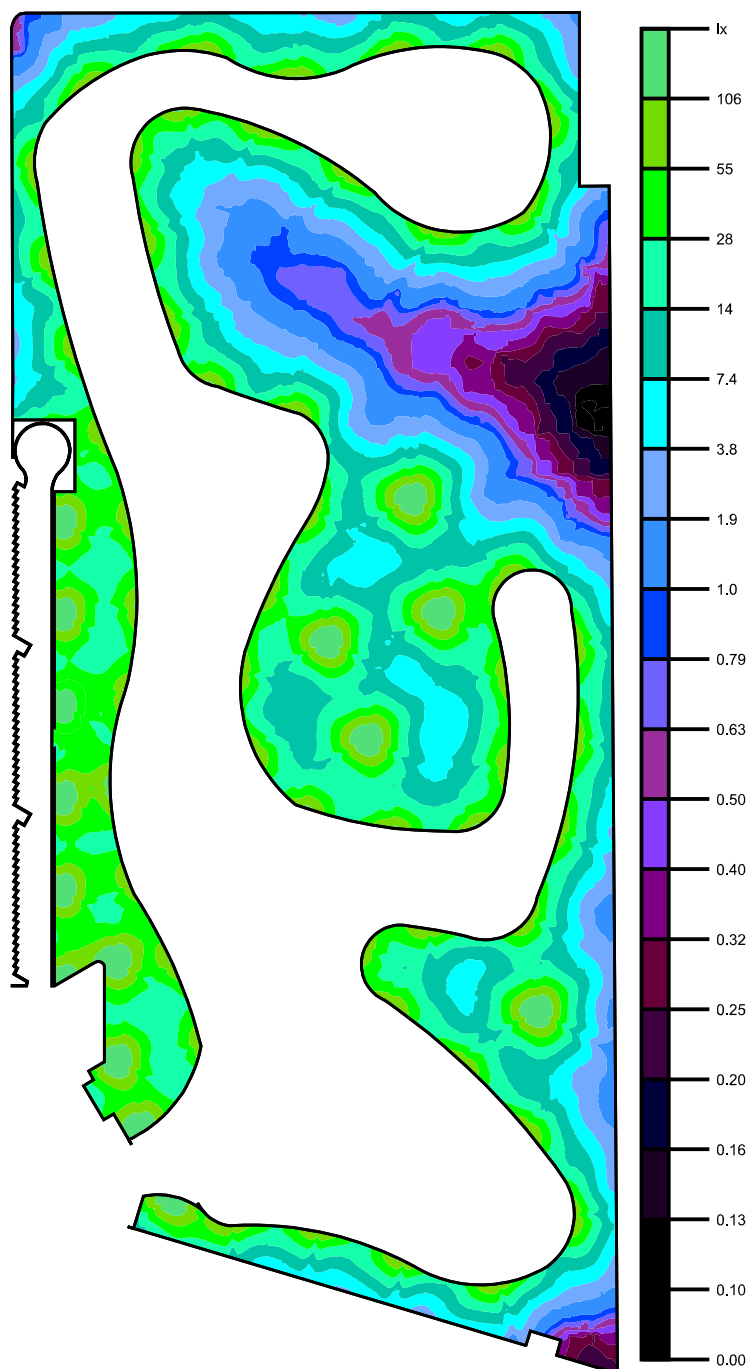
Médio: 22.5 lx, Min: 0.099 lx, Máx: 205 lx, Mín/Médio: 0.004, Mín/ Máx: 0.000

Linhas isográficas [lx]



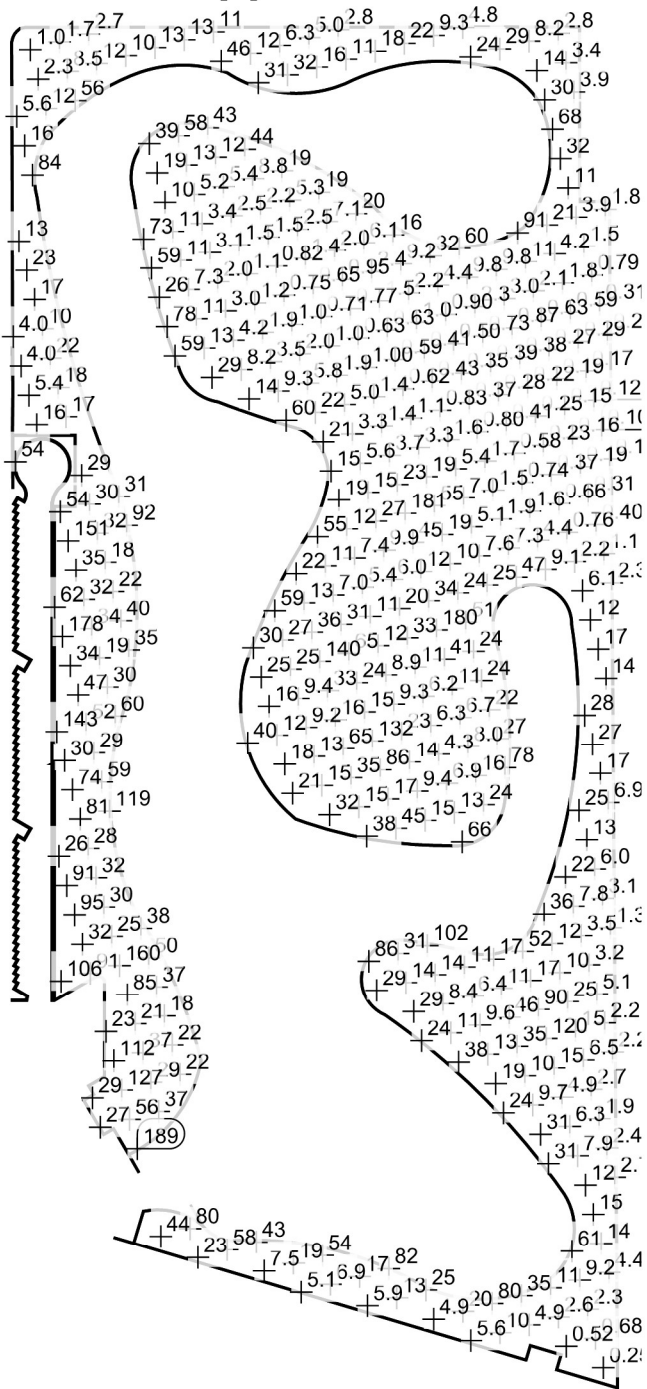
Escala: 1 : 2500

Cores falsas [lx]



Escala: 1 : 2500

Grelha de valores [lx]



Escala: 1 : 2500

Área interna a Pista / Potência luminosa perpendicular (adaptivo)



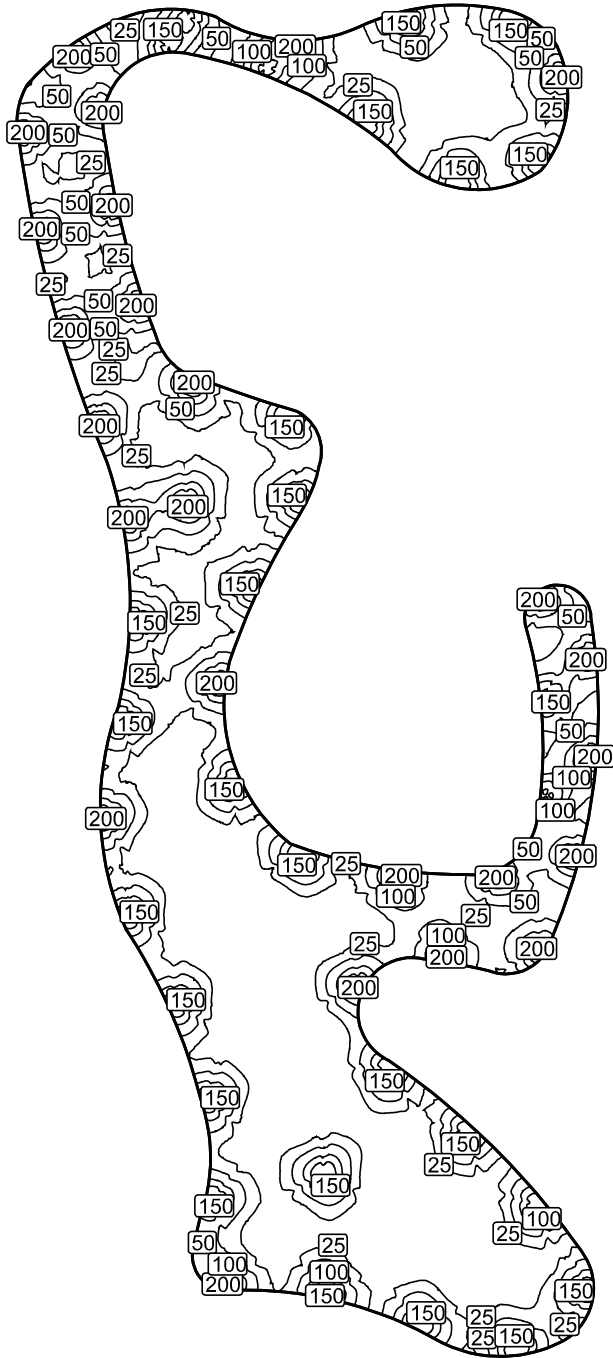
Factor de manutenção: 0.80

Área interna a Pista: Potência luminosa perpendicular (adaptivo) (Superfície)

Cenário de Luz: Cenário de Luz 1

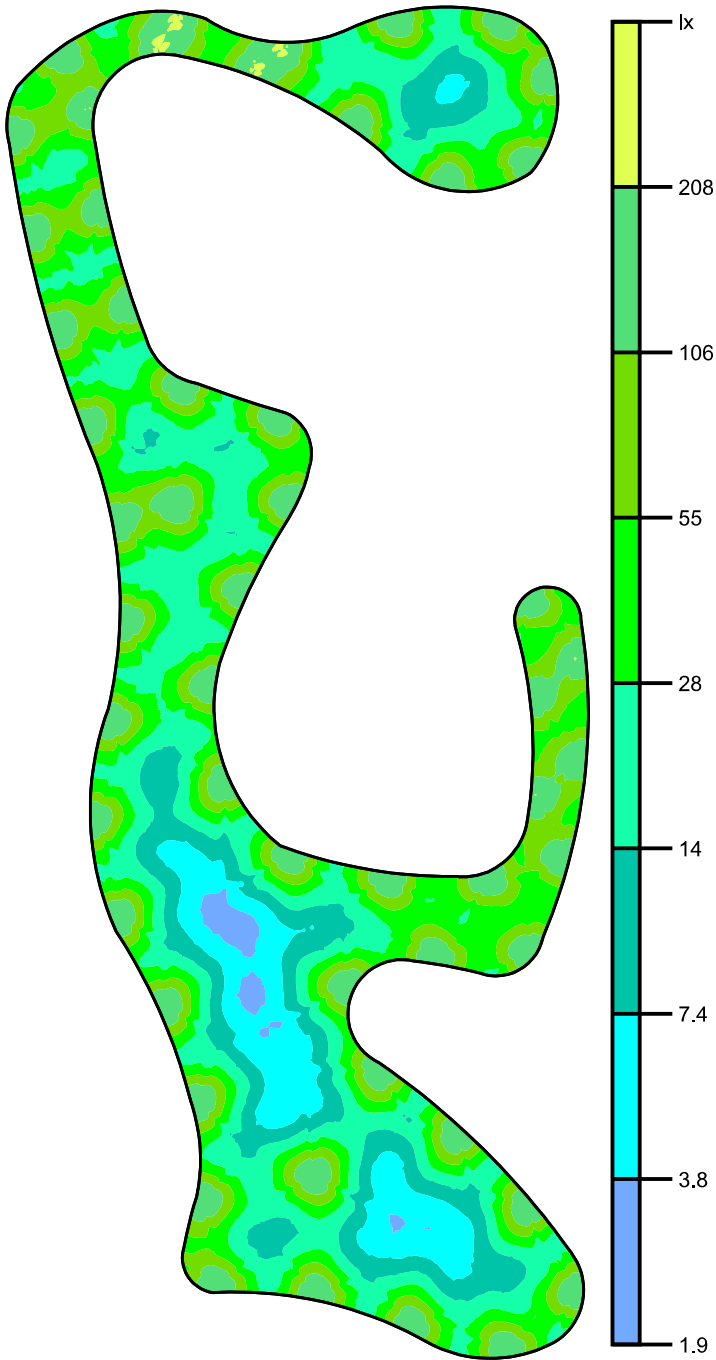
Médio: 51.5 lx, Min: 2.88 lx, Máx: 233 lx, Mín/Médio: 0.056, Min/ Máx: 0.012

Linhas isográficas [lx]



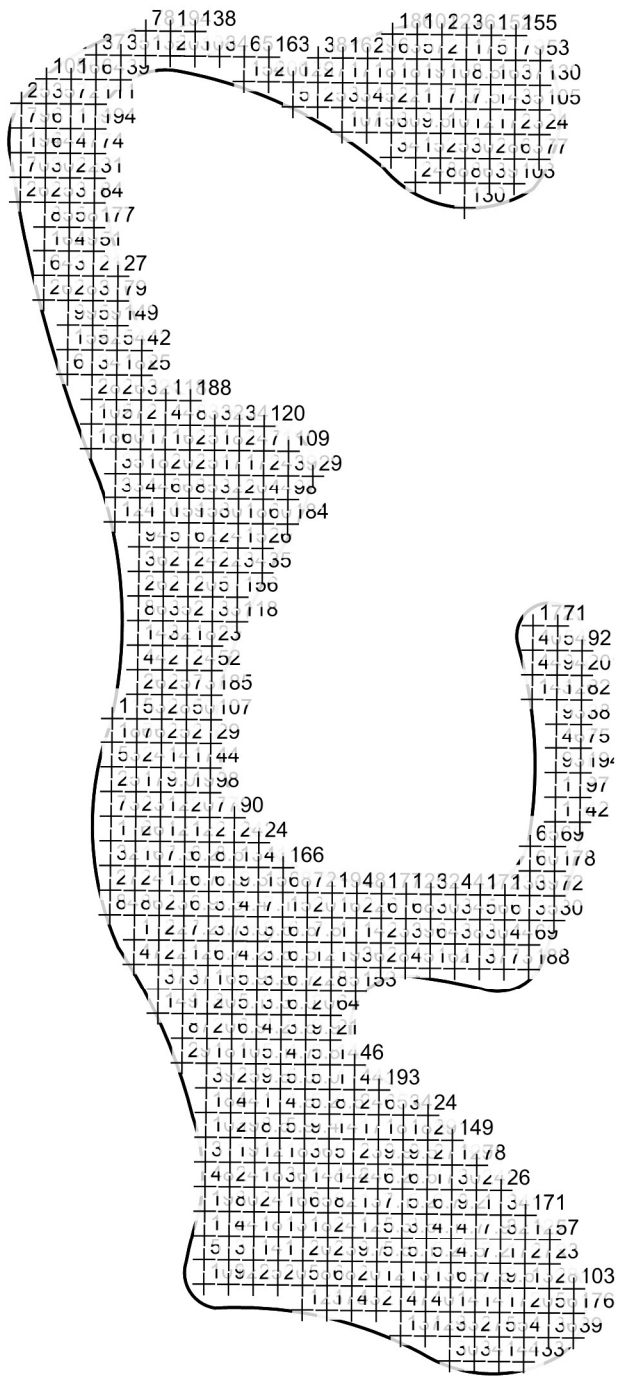
Escala: 1 : 2250

Cores falsas [lx]



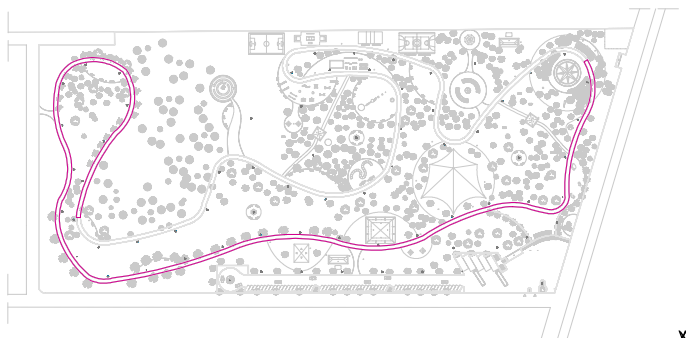
Escala: 1 : 2250

Grelha de valores [lx]



Escala: 1 : 2250

Pista inferior / Potência luminosa perpendicular (adaptivo)



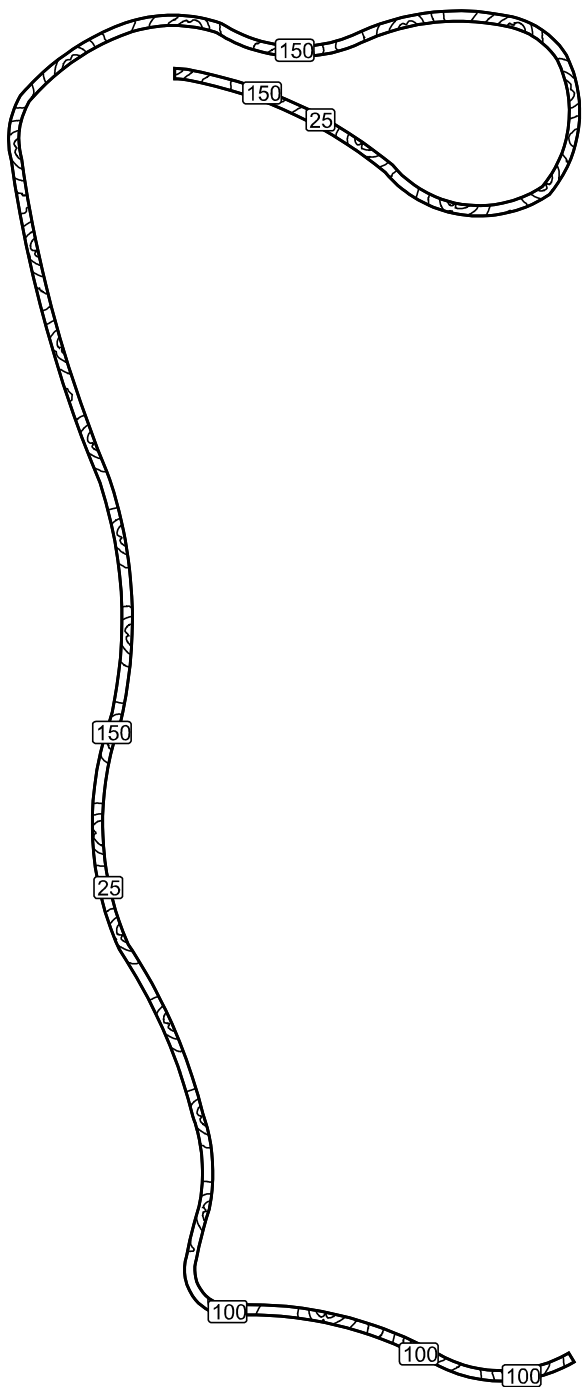
Factor de manutenção: 0.80

Pista inferior: Potência luminosa perpendicular (adaptivo) (Superfície)

Cenário de Luz: Cenário de Luz 1

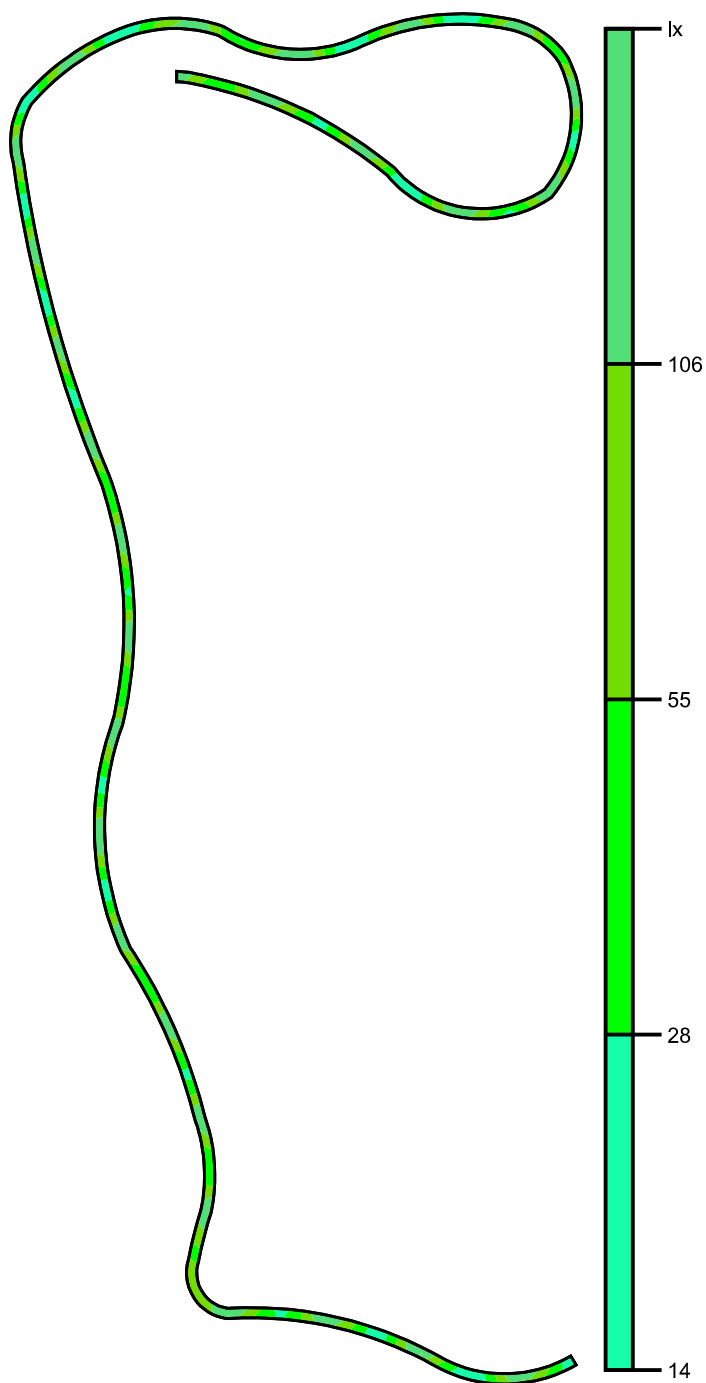
Médio: 74.7 lx, Min: 16.1 lx, Máx: 204 lx, Mín/Médio: 0.22, Mín/ Máx: 0.079

Linhas isográficas [lx]



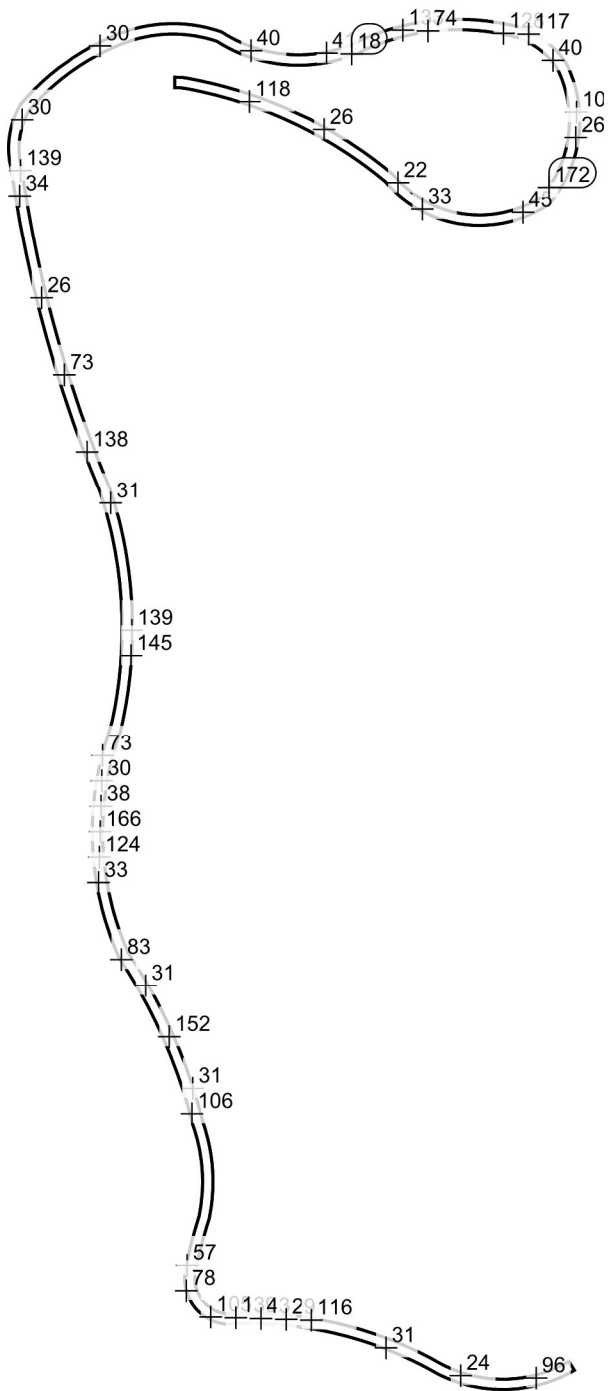
Escala: 1 : 2250

Cores falsas [lx]



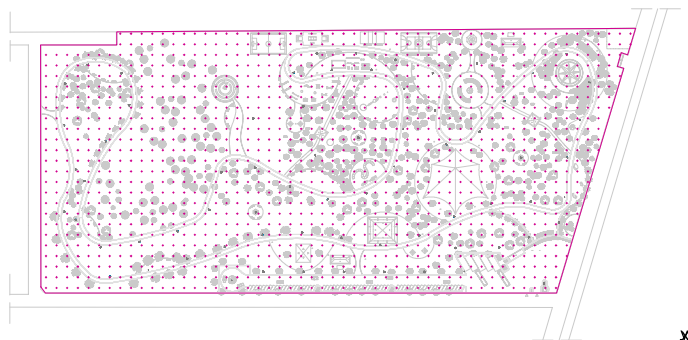
Escala: 1 : 2250

Grelha de valores [lx]



Escala: 1 : 2250

Área Total / Potência luminosa perpendicular



Factor de manutenção: 0.80

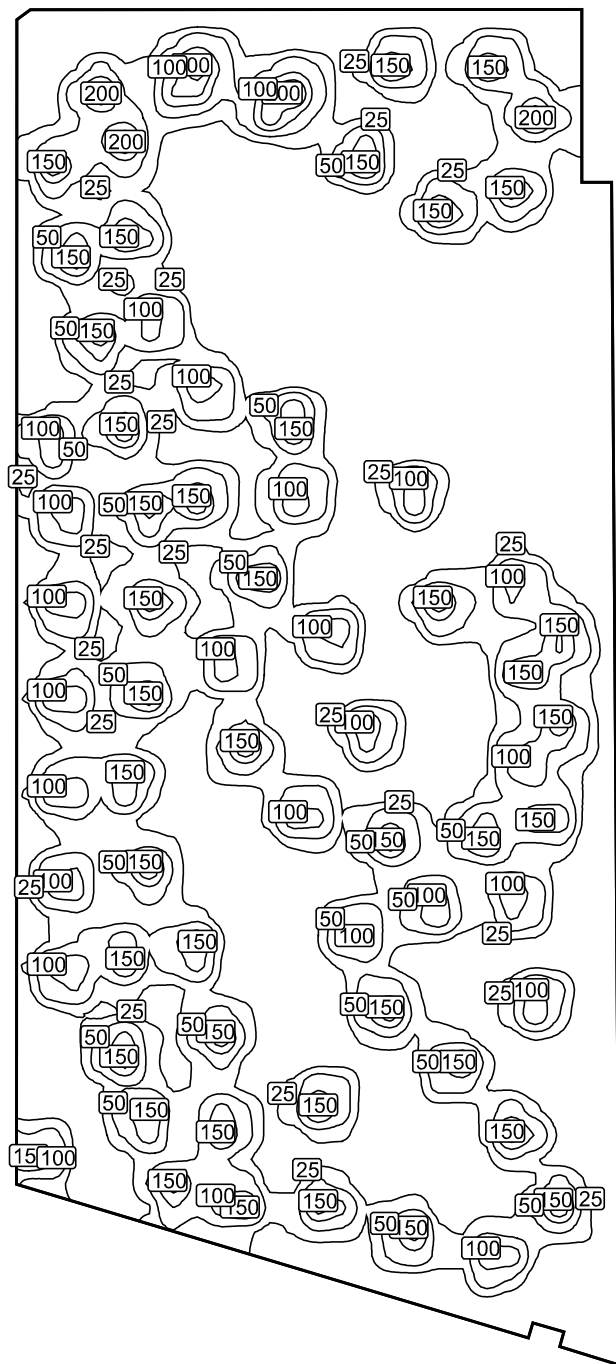
Área Total: Potência luminosa perpendicular (Trama)

Cenário de Luz: Cenário de Luz 1

Médio: 36.4 lx, Min: 0.086 lx, Máx: 227 lx, Mín/Médio: 0.002, Mín/ Máx: 0.000

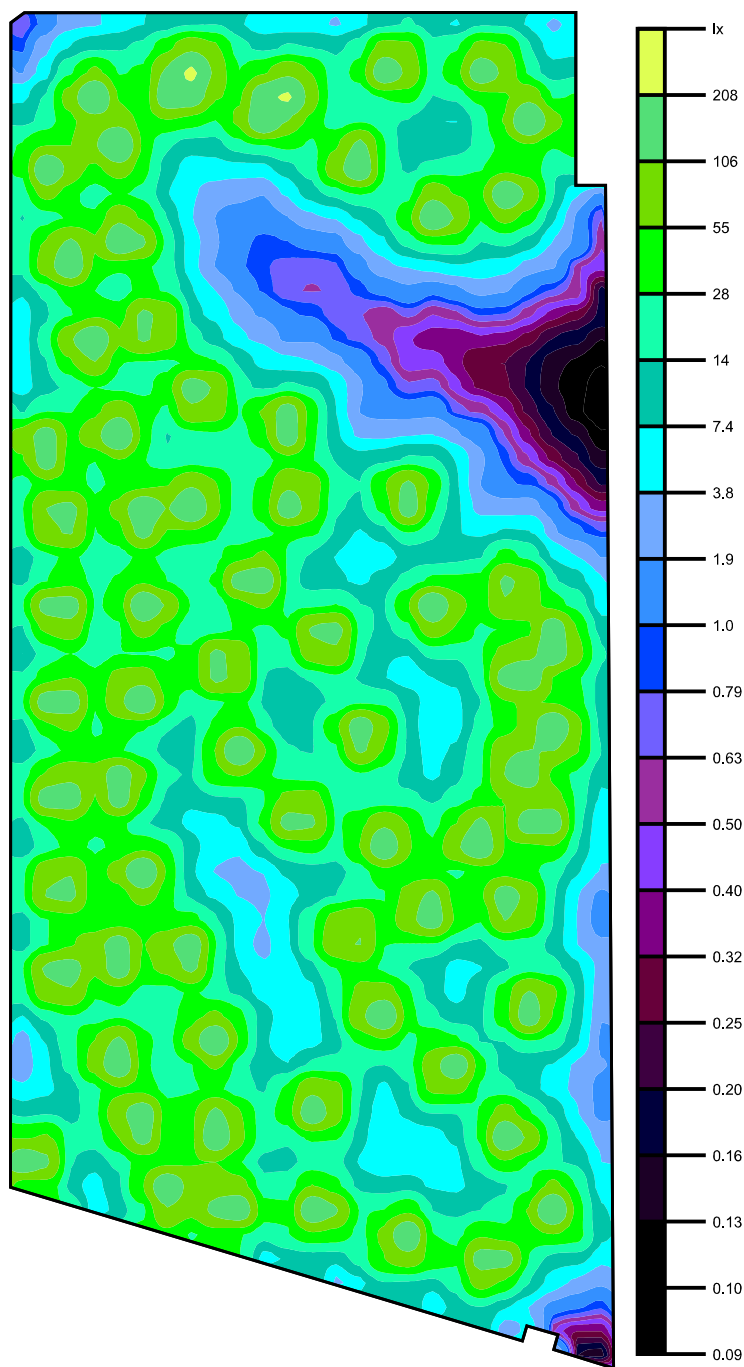
Altura: 0.000 m

Linhas isográficas [lx]



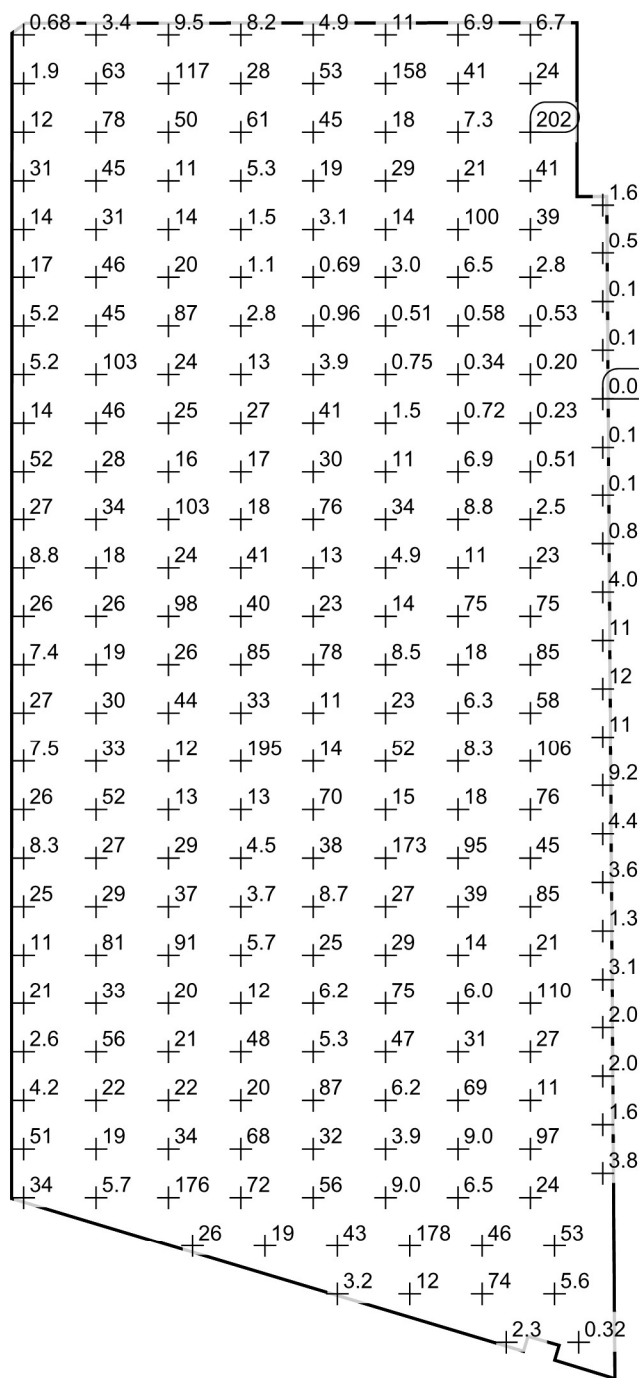
Escala: 1 : 2500

Cores falsas [lx]



Escala: 1 : 2500

Grelha de valores [lx]



Escala: 1 : 2500

Tabela de valores [lx]

m	-258.898	-250.865	-242.833	-234.801	-226.768	-218.736	-210.703	-202.671	-194.638	-186.606	-178.573	-170.541	-162.508
58.544	/	/	/	/	/	/	/	1.62	0.64	0.53	0.43	0.17	0.19
50.538	/	/	/	/	/	/	/	4.18	1.67	1.78	0.53	0.56	0.28
42.533	3.35	5.32	9.48	26.2	72.3	31.0	15.0	15.3	8.56	3.61	2.08	0.77	0.36
34.527	6.74	16.2	24.4	83.5	202	48.7	41.3	94.6	38.6	11.3	2.78	1.10	0.53
26.521	12.2	59.7	95.5	49.1	57.3	33.9	43.0	182	70.8	17.5	5.32	2.06	0.77
18.516	12.9	70.8	155	38.4	18.0	16.5	27.2	47.3	30.4	14.2	6.55	2.40	0.81
10.510	6.94	26.5	41.2	17.0	7.33	10.0	20.9	51.5	99.8	32.4	6.54	1.59	0.58
2.505	10.3	17.7	21.0	14.0	7.60	7.58	18.1	83.0	177	32.2	5.15	1.18	0.50
-5.501	15.3	65.2	96.2	36.4	13.7	9.20	13.0	22.2	42.1	18.2	3.96	1.76	0.67

Praça Espaço do Saber / Área Total / Potência luminosa perpendicular

m	-258.898	-250.865	-242.833	-234.801	-226.768	-218.736	-210.703	-202.671	-194.638	-186.606	-178.573	-170.541	-162.508
-13.507	10.8	74.2	158	29.2	18.3	29.8	29.1	19.9	14.5	6.57	2.99	1.20	0.51
-21.512	5.98	21.1	36.6	15.5	25.7	121	164	29.5	8.18	3.09	1.38	0.88	0.64
-29.518	3.46	12.1	18.5	17.4	19.7	49.5	78.1	17.5	3.96	1.45	0.76	0.64	0.68
-37.523	4.91	14.7	53.2	77.4	44.6	25.5	19.0	9.87	3.13	1.29	0.69	0.62	0.96
-45.529	4.49	16.0	87.6	222	104	34.2	10.6	4.19	1.88	0.98	0.75	0.66	1.09
-53.535	4.93	11.8	48.9	168	182	26.8	5.55	1.99	1.39	0.89	0.82	0.95	1.74
-61.540	8.24	20.3	28.4	48.8	61.5	20.2	5.33	2.40	1.53	1.24	1.11	1.72	2.84
-69.546	14.4	62.2	92.3	59.0	27.4	11.1	5.59	2.68	1.92	2.14	1.88	3.78	6.22
-77.551	13.6	91.0	227	161	40.9	10.4	5.48	4.38	3.99	5.67	5.24	7.97	10.8
-85.557	9.48	44.5	117	156	49.5	16.5	11.1	7.72	14.0	21.6	19.6	25.7	86.8
-93.563	7.32	17.3	32.1	34.2	43.7	45.7	36.4	23.9	49.8	116	32.5	36.3	117
-101.568	5.20	13.3	26.7	48.3	82.5	203	81.0	29.8	89.4	172	34.6	19.5	40.8
-109.574	3.38	12.3	63.4	203	78.0	97.1	44.7	22.3	31.2	60.1	45.8	28.3	44.9
-117.580	2.92	7.78	25.6	72.1	46.0	54.5	85.7	35.0	29.8	115	168	41.3	26.9
-125.585	1.15	3.19	5.27	15.5	17.6	54.7	188	72.4	21.4	57.9	75.8	18.2	13.0
-133.591	0.68	0.88	1.87	5.93	11.5	29.5	30.8	21.4	14.0	19.0	17.3	8.63	5.24

m	-154.476	-146.443	-138.411	-130.378	-122.346	-114.313	-106.281	-98.248	-90.216	-82.183	-74.151	-66.118	-58.086	-50.053
58.544	0.13	0.10	0.090	0.086	0.10	0.13	0.19	0.35	0.81	1.88	4.00	5.04	10.6	15.6
50.538	0.17	0.12	0.11	0.11	0.16	0.20	0.31	0.54	1.16	3.82	9.89	22.6	53.0	71.9
42.533	0.20	0.14	0.13	0.16	0.20	0.30	0.58	1.21	2.26	6.69	16.6	41.6	155	155
34.527	0.28	0.20	0.19	0.23	0.33	0.51	0.97	2.55	7.67	22.7	88.1	75.0	48.3	84.7
26.521	0.35	0.25	0.26	0.40	0.63	0.92	1.09	2.44	7.95	35.9	116	102	29.2	68.1
18.516	0.38	0.26	0.30	0.60	1.35	2.25	1.91	2.92	6.23	13.3	33.2	40.3	25.4	26.1
10.510	0.34	0.34	0.44	0.72	2.17	6.90	8.16	8.83	7.98	11.0	31.8	74.5	50.6	17.6
2.505	0.36	0.45	0.71	1.46	3.88	15.4	47.3	32.2	17.1	9.62	31.8	186	84.0	18.2
-5.501	0.41	0.44	0.66	1.25	3.78	15.7	115	143	27.3	9.81	17.3	52.7	22.1	7.75
-13.507	0.58	0.75	1.10	1.47	3.02	10.8	50.5	33.8	11.0	4.91	9.98	13.9	12.1	8.48
-21.512	0.74	1.37	2.11	1.88	3.36	9.11	14.7	13.0	6.89	4.99	6.38	14.6	21.8	17.7
-29.518	0.91	2.40	6.27	7.38	8.82	13.5	18.8	16.1	12.8	7.23	8.85	28.9	124	97.7
-37.523	1.70	3.94	14.4	41.1	35.9	29.5	76.2	75.7	32.1	13.1	10.3	22.7	112	77.9
-45.529	1.62	4.49	15.9	139	151	42.5	90.9	149	33.0	26.4	23.6	24.1	31.5	22.8
-53.535	3.20	5.96	12.6	58.6	43.4	19.5	32.2	37.0	23.4	61.2	156	61.8	25.5	19.4
-61.540	4.49	12.9	19.9	26.7	20.9	16.6	20.1	18.3	15.8	41.4	137	40.2	30.9	85.0
-69.546	10.0	29.6	101	77.5	23.8	19.9	56.9	67.8	31.2	24.5	30.2	19.0	18.7	118
-77.551	23.2	32.3	144	91.8	20.6	19.3	94.2	191	44.4	21.1	19.3	26.4	16.8	33.7
-85.557	78.0	23.6	39.8	25.2	13.7	16.3	51.6	103	50.1	24.2	28.0	98.4	40.9	26.4
-93.563	113	24.2	22.5	42.2	42.4	30.3	39.0	173	131	32.1	45.7	186	79.4	26.6
-101.568	59.9	30.2	23.4	83.0	192	52.7	32.8	67.8	43.2	21.6	30.2	36.2	25.5	28.0
-109.574	177	103	28.3	46.0	83.2	28.5	25.1	33.5	27.1	18.4	23.1	25.8	18.7	19.1
-117.580	96.9	48.9	15.9	27.3	45.2	38.1	38.7	120	110	32.3	41.6	136	83.9	28.3
-125.585	19.4	14.1	11.0	28.4	140	143	44.0	106	90.8	21.4	27.7	131	62.9	19.0
-133.591	4.69	5.18	5.33	13.6	70.8	52.0	19.5	27.5	23.0	8.77	12.3	26.1	12.9	7.37

m	-42.021	-33.988	-25.956	-17.923	-9.891	-1.858	6.174	14.206	22.239	30.271	38.304	46.336	54.369	62.401	70.434	78.466
58.544	12.3	11.0	11.1	14.2	9.24	6.56	4.37	4.39	3.59	1.62	1.33	2.07	3.10	2.40	2.04	1.67
50.538	31.6	35.5	69.5	57.5	25.1	24.1	20.4	14.8	8.24	4.02	3.69	3.79	8.49	11.6	10.4	7.97
42.533	52.1	50.9	194	107	45.4	74.0	145	51.4	21.2	15.9	14.3	11.3	17.5	64.1	51.5	21.8
34.527	166	58.3	69.4	106	144	76.0	152	44.8	33.9	84.8	68.8	21.0	20.1	110	149	27.3
26.521	132	50.8	35.1	92.7	107	56.2	52.6	52.3	41.9	148	108	21.7	12.8	37.0	39.7	14.6
18.516	18.2	14.4	16.8	22.8	24.3	32.8	119	162	37.6	48.0	30.2	12.6	7.22	10.3	12.5	13.7

Praça Espaço do Saber / Área Total / Potência luminosa perpendicular

m	-42.021	-33.988	-25.956	-17.923	-9.891	-1.858	6.174	14.206	22.239	30.271	38.304	46.336	54.369	62.401	70.434	78.466
10.510	8.87	6.34	5.57	8.32	11.4	18.1	54.4	94.8	25.0	38.8	46.7	13.7	5.99	6.01	9.32	31.0
2.505	7.34	5.78	4.41	5.49	6.28	12.7	20.5	31.3	34.2	118	144	26.0	10.3	10.7	17.8	38.8
-5.501	5.35	10.5	11.9	12.7	11.4	16.5	52.6	60.1	40.5	66.2	82.4	27.1	14.2	31.6	38.8	23.5
-13.507	7.72	22.6	69.3	51.9	20.2	14.9	89.7	173	42.0	27.2	33.3	28.9	24.0	74.7	177	47.0
-21.512	13.2	23.8	149	115	24.5	15.7	43.8	55.9	19.5	21.8	91.0	107	44.8	62.7	86.3	32.2
-29.518	22.9	15.8	45.2	24.9	14.9	22.3	25.3	20.7	11.1	14.4	69.7	88.0	28.1	18.4	15.2	10.2
-37.523	15.9	11.1	13.3	14.0	19.0	70.5	115	38.2	11.0	8.66	22.7	25.0	11.1	6.21	4.63	5.32
-45.529	10.0	7.95	8.50	15.5	21.7	65.0	126	30.6	8.78	5.85	6.98	6.22	3.83	4.65	4.49	4.18
-53.535	15.0	12.9	20.5	60.0	33.6	27.3	31.4	12.8	3.90	3.34	3.74	3.18	4.11	4.98	11.0	9.30
-61.540	93.4	33.5	51.7	195	58.5	13.4	8.37	4.45	3.20	3.67	6.49	5.73	7.54	12.3	33.7	47.8
-69.546	117	24.3	31.0	56.2	42.9	12.7	6.10	5.25	3.65	6.33	15.5	29.3	22.9	20.0	62.2	183
-77.551	35.9	19.3	12.2	10.7	13.9	9.07	6.17	10.1	8.82	12.5	33.6	150	120	30.9	42.5	70.9
-85.557	35.0	44.4	16.0	11.6	16.6	12.8	11.0	29.5	47.4	37.1	28.1	91.1	67.2	20.2	19.2	21.5
-93.563	77.2	171	31.7	20.4	63.7	42.9	16.3	39.5	197	79.6	35.3	52.6	46.3	22.9	18.1	38.0
-101.568	67.3	89.0	39.6	29.7	151	144	32.4	30.2	76.3	36.0	34.4	138	152	37.0	25.9	117
-109.574	33.7	30.4	24.8	33.3	71.1	51.7	32.1	26.7	34.5	29.5	28.5	80.6	65.5	33.0	20.9	55.7
-117.580	55.4	144	64.8	31.7	84.8	143	48.9	31.8	101	117	41.1	49.1	134	102	26.1	20.7
-125.585	38.2	148	43.8	19.4	58.7	141	32.0	20.6	82.4	109	26.8	26.5	116	83.2	17.4	7.90
-133.591	15.7	26.7	10.7	7.53	20.4	26.5	12.1	8.26	23.7	24.6	10.8	10.8	26.8	21.3	7.00	2.61

m	86.499	94.531	102.564	110.596	118.629	126.661	134.694	142.726	150.759	158.791	166.824	174.856	182.889
58.544	2.02	1.55	1.60	2.91	3.78	5.18	7.94	8.45	4.58	2.17	0.83	0.32	0.14
50.538	3.26	3.26	3.99	7.21	12.2	26.2	40.1	35.7	10.1	3.30	1.09	0.32	0.16
42.533	7.09	5.55	13.2	21.1	17.1	64.5	199	53.2	11.5	5.56	1.44	0.51	/
34.527	9.24	10.6	31.2	96.6	27.8	24.3	57.9	40.6	27.7	14.5	3.74	/	/
26.521	11.3	19.0	74.6	179	49.7	13.2	17.8	34.8	133	48.0	8.02	2.29	/
18.516	37.4	24.8	29.4	30.3	20.0	9.71	14.5	46.5	133	74.4	13.9	/	/
10.510	163	68.7	14.6	8.96	5.80	6.51	10.8	24.0	30.7	20.1	9.73	/	/
2.505	77.4	61.6	14.4	5.10	3.98	6.62	14.3	28.9	40.6	10.9	3.99	/	/
-5.501	20.6	13.2	8.71	4.55	4.19	10.2	42.4	178	87.3	12.2	/	/	/
-13.507	14.3	6.23	4.91	3.93	4.41	8.97	28.6	63.2	53.9	13.5	/	/	/
-21.512	16.2	15.5	12.8	10.2	6.74	11.7	25.8	22.7	18.2	5.87	/	/	/
-29.518	18.0	66.8	74.8	30.1	16.7	34.0	112	43.0	9.83	3.19	/	/	/
-37.523	15.9	87.4	158	32.2	17.9	56.3	171	46.8	10.4	/	/	/	/
-45.529	7.62	31.6	39.2	16.9	12.2	19.2	32.2	26.7	8.20	/	/	/	/
-53.535	10.4	13.4	20.4	20.4	11.9	17.7	37.1	18.9	4.90	/	/	/	/
-61.540	19.6	19.7	58.3	67.8	30.3	71.8	155	30.1	/	/	/	/	/
-69.546	64.1	31.3	121	171	54.5	82.0	121	39.1	/	/	/	/	/
-77.551	27.0	26.0	46.6	45.2	50.6	82.3	66.6	26.0	/	/	/	/	/
-85.557	16.4	21.9	38.2	34.3	41.5	176	100	/	/	/	/	/	/
-93.563	38.7	44.2	154	132	37.4	53.2	22.6	/	/	/	/	/	/
-101.568	168	48.2	83.0	55.3	17.8	12.5	9.50	/	/	/	/	/	/
-109.574	67.2	22.3	22.1	19.5	9.86	5.66	4.43	/	/	/	/	/	/
-117.580	17.4	10.4	10.6	19.7	15.9	10.9	/	/	/	/	/	/	/
-125.585	6.03	6.03	13.2	59.0	116	41.1	/	/	/	/	/	/	/
-133.591	2.25	4.17	10.1	50.8	159	34.4	/	/	/	/	/	/	/